

D ≡ **Sign** **4u**
A Typography Specimen Book

By Jacob P. Fagaly

"Art is fraud all you need to do is do something no one has done before"

Making Connections 2

FORM

October 25 1982 JF

TIME



2 yrs old makes personal comics to pass time. His hand and hand-drawn feverdamages heart. In 4 yrs old first watercolor painting. 14 yrs old paints for the first time creates painting based on impressionism.

1984

color

Line 1987

5 yrs old colors 1st coloring book

8 yrs old draws first drawing

10 yrs old creates coloring book

1994



1998

16 yrs old I paint for the first time and create paintings based on early works of impressionism. I thought the style was very much a must have at the time. Fine art style I adopted at this point was to develop a sense of rhythm for my art and give environments character.

1998
I've always been interested in putting things together though not as much as taking them apart.



2000



18 yrs old I finish my first watercolor painting the entire experience made a lasting impression on how I understand opacity and the transparency. I explore artist like Vincent van Gough for his use of motion using layer of varying color with line.

"I've always been interested in putting things together though not as much as taking them apart."

2002

20 yrs old I take my first formal art classes at Palomar Community College Escondido under prof. Ronald Ken Joudrey. This is the stage I really get serious and pursue my career in the fine arts. I at this stage take an interest in Jim Dyne an artist who like to work mostly in charcoal and paper.



Communication DESIGN

April 15 2011 JF

NOW 2011

D = Sign 4 U

A Typography Specimen Book

© Spring 2011 Jacob P. Fagaly

All rights reserved. No part of this publication may be republished, systematically reproduced or transmitted in any form or by any means, including photocopying, recording, or by any information storage or retrieval system, without permission in writing from

Publisher: FedEx Kinkos Office and Print Center 141 North Twin Oaks Valley

Road #128, San Marcos, CA

Production Notes

This book was designed using Adobe InDesign, Illustrator, and Photoshop and output to Portable Document Format (PDF). The fonts in the book are Helvetica Neue, Impact, Helvetica. Thirty-six pages at 10" x 10"; Digital illustrations, color photos. Output on Laser print semi-gloss

Contributors

The students of the first ever Advanced Graphic Design class of the Visual and Performing Arts Department of California State University San Marcos: Asbury, Lucia; Choi, Nathaniel; Dalit, Joemell; Gonzaga, Nicole; Hall, Morgan; Lopez, Eric; McCormick, Lance; Nolan, Mathew; Olson, Donovan; Parker, Ryan; Reynoso, Lauren; Rodriguez, Lilyana; Sevilla, Eric; Volbeda, Ashley; Warlick, Jeff.

Book and cover design,

ography and selected authorship: Jacob P. Fagaly

Disclaimer

The publisher shall not be held liable for inaccuracies in the text. The views expressed are those of the author. The articles are not intended to be definitive and should not be relied upon as a substitute for specialist advice

References

Ellen Lupton, Thinking with Type, 2nd revised and expanded edition: A Critical Guide for Designers, Writers, Editors, & Students (Design Briefs) (New York, Princeton Press, 2004, 2010) Luke Herriott, The Designer's Packaging Bible Creative Solutions For Outstanding Design (,

University Affiliation

California State University San Marcos 333 S Twin Oaks Valley Road San Marcos, CA 92096-0001 United States of America 760-750-4000 www.csusm.edu

TAVERN OF THE GREEN

HEALTHY WRAPS

Chicken Strips.....	\$3.95
Chicken Greek Style.....	\$4.25
Turkey.....	\$3.95
Vegetarian.....	\$3.75
Crispy Fish.....	\$3.95
Make It A Combo Add.....	\$2.40

FRESH SALADS

Chicken Breast.....	\$5.35
Chicken Strip.....	\$5.10
Greek Tavern.....	\$4.60
Avacado.....	\$4.50
Garden.....	\$3.50
Side Salad.....	\$2.10
Add Chicken.....	\$1.85

KID'S MENU

CHOICES INCLUDE

Burger, Hot Dog, Corn Dog, Chicken Strips or Grilled Cheese
Fries & Drink.....\$4.03

BURGERS

MAKE IT A COMBO FOR \$2.40

Hamburger.....	\$1.63
Cheese Burger.....	\$1.93
Double Burger.....	\$2.33
2x2 Burger.....	\$2.93
3x3 Burger.....	\$3.93
Fab-4 Burger.....	\$4.93
Garden Burger.....	\$3.35
Low Carb Burger.....	\$1.63
Bacon Avo Cheese Burger.....	\$3.15
Mushroom Cheese Burger.....	\$2.53
Make It A Combo add.....	\$2.40

SANDWICHES

Egg & Cheese.....	\$5.95
Egg & Bacon, Ham or Sausage, ...	\$3.90
or Avacado and Hot Dog	
Chicken Breast.....	\$4.75
BLT & Avacado.....	\$4.95
Turkey Avacado.....	\$4.95
Spicy Chicken.....	\$3.35
Crispy Fish.....	\$3.55
Patty Melt.....	\$3.45
Turkey Melt.....	\$3.95
Grilled Cheese.....	\$2.35
Grilled Ham Cheese.....	\$3.65
Avacado.....	\$3.25
Triple Mess Melt.....	\$4.50
Make It A Combo Add.....	\$2.40

Reproduce both pages of this document exactly and outout a 2-page PDF when your done.

This is a text block! (48)

This is a text block!
This is a text block!
This is a text block!

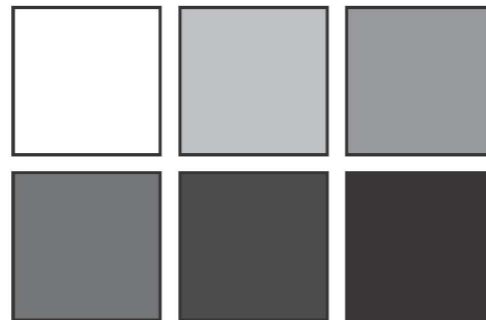
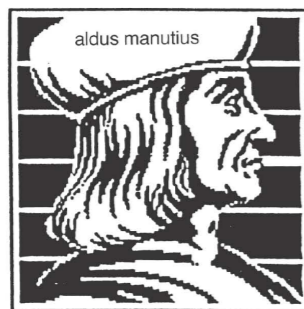
This is a text block! (9)

This is a text block! (18)

This is a text block! (24)

This is a text block! (32)

This is a text block! (42)



THE MONEY PIT

DRIVE THRU

1360 East Mission RD
San Marcos, Ca. 92025
Hours: 7am-11pm Daily
Phone: 760-743-7775

PIT SPECIALTY COMBO

**SALAD & FRIES , ONION RINGS
OR ZUCCHINI & DRINK INCLUDED**

Chicken Strips (3 count).....\$5.70
Fish 'N' Chips (3 count).....\$5.70

BREAKFAST

SERVED ALL DAY

2 Egg Plate.....\$2.95
2 Egg Plate With Bacon,
Ham, or Sausage\$4.95
The Mess\$5.45
French Toast (3)
or Pancakes (3)\$3.75
Pancakes (2) Combo or
French Toast (2Combo)\$4.25

MORNING WRAPS

Eggs Cheese Hashbrowns.....\$3.20
Eggs Cheese Hashbrowns (Optional Bacon,
Ham, Sausage, Avacado,
Or Hotdog.....\$4.20
The Mess Wrap\$4.50

OMELETTES

Western.....\$5.95
Ham & Cheese.....\$5.95
Greek.....\$5.95
Chili Cheese.....\$5.50
Vegetarian.....\$5.95

BEVERAGES

SERVED ICE COLD

Coke, Diet Coke, Sprite,
Rootbeer, Lemonade, Mr. Pib,
Powerade, Raspberry iced Tea,
Green Tea, Black Tea Sweetened
Black Tea, Orange Fanta

Small \$1.45
Large\$1.85
Coffee, Hot Tea, Hot Cocoa\$1.35
Milk, Orange Juice\$1.99
Bottled Water\$1.25

COOL SCOOPS

MADE WITH REAL ICE CREAM

Shakes or Malts: Chocolate,
Strawberry, Vanilla, Banana or
Rootbeer Float\$2.60
Sundaes: Strawberry, Pineapple or
Hotfudge\$3.75
Ice Cream Cones

Single\$1.40
Double\$1.95
Banana Split\$4.25

International Fair

th Event will be held at
Annual International Fair

Thursday, April 14
11:00pm-2:00pm

Organized by: University Global Affairs Committee
Sponsored By A Co-Curricular Funding Award,
Office of Global Education,
ASI and SLL
Poster Designed by: Jacob P. Fagaly

Font attributes

the icing upon the written language

font size

18 pts

24pts

36 pts

Kerning

leading

line one
line two
line three

line one
line two
line three

line one
line two
line three

tracking

The quick fox jumped over the lazy dog.

The quick fox jumped over the lazy dog.

The quick fox jumped over the lazy dog.

baseline shift

ju^mble

proportional scale

Height to width relationship is maintained by holding down the shift key. This is how all text should be resized! Respect the font!

RESPECT TYPOGRAPHY

RESPECT TYPOGRAPHY

**RESPECT
TYPOGRAPHY**

non-proportional scale

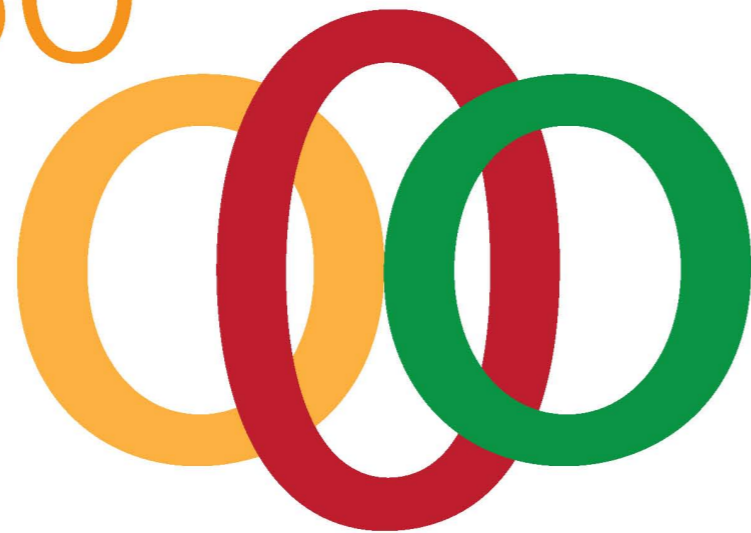
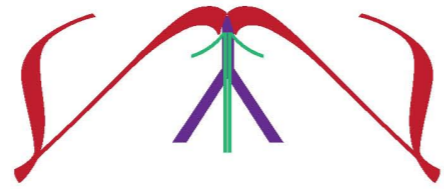
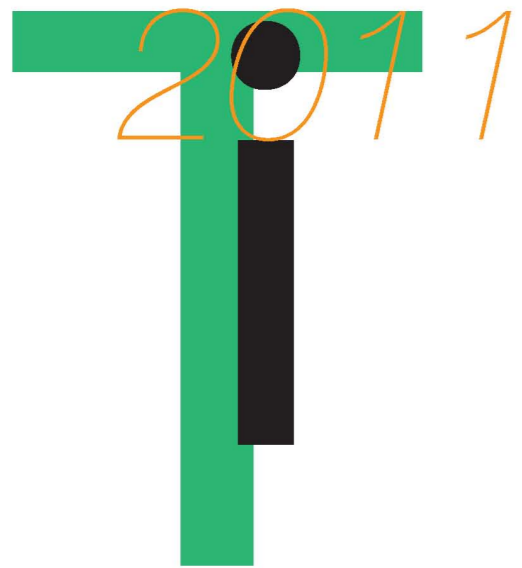
Height to width relationship is **not** maintained. This should in nearly every case be avoided! Font is twisted out of proportion or *skewed* . . . Respect the font!

DON'T DO THIS

DON'T DO THIS

DON'T DO THIS

1A 2B 3C 3D 4E 5F 6G 7H 8I 9J 10K 11L 12M 13N
14O 15P 14Q 15R 16S 17T 18U 19V 20W 21X 22Y 23Z



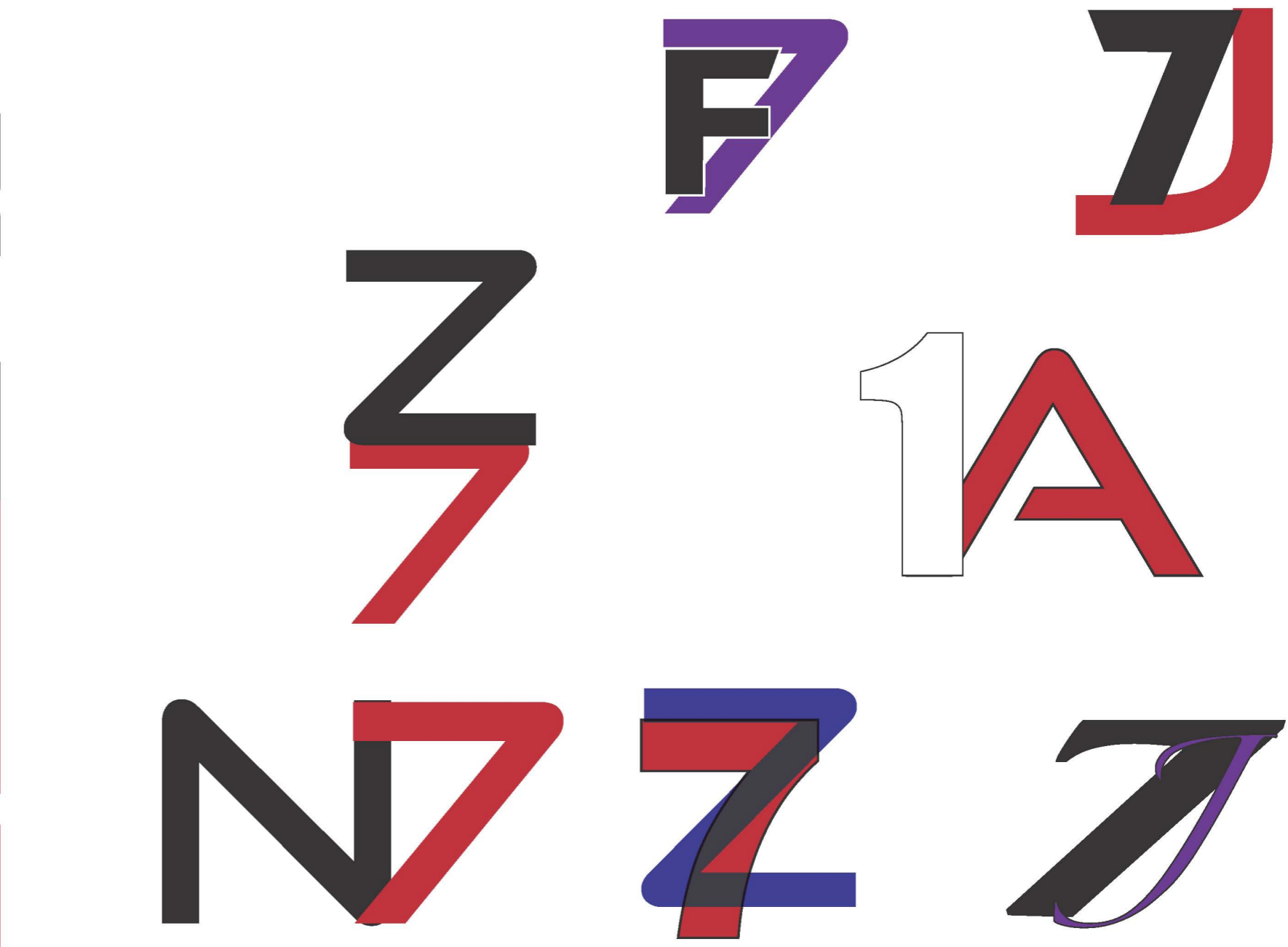
atomy

Counter

Ascender

Descender

Grid





zaphino 196pt.



Intergrated design
point/counterpoint

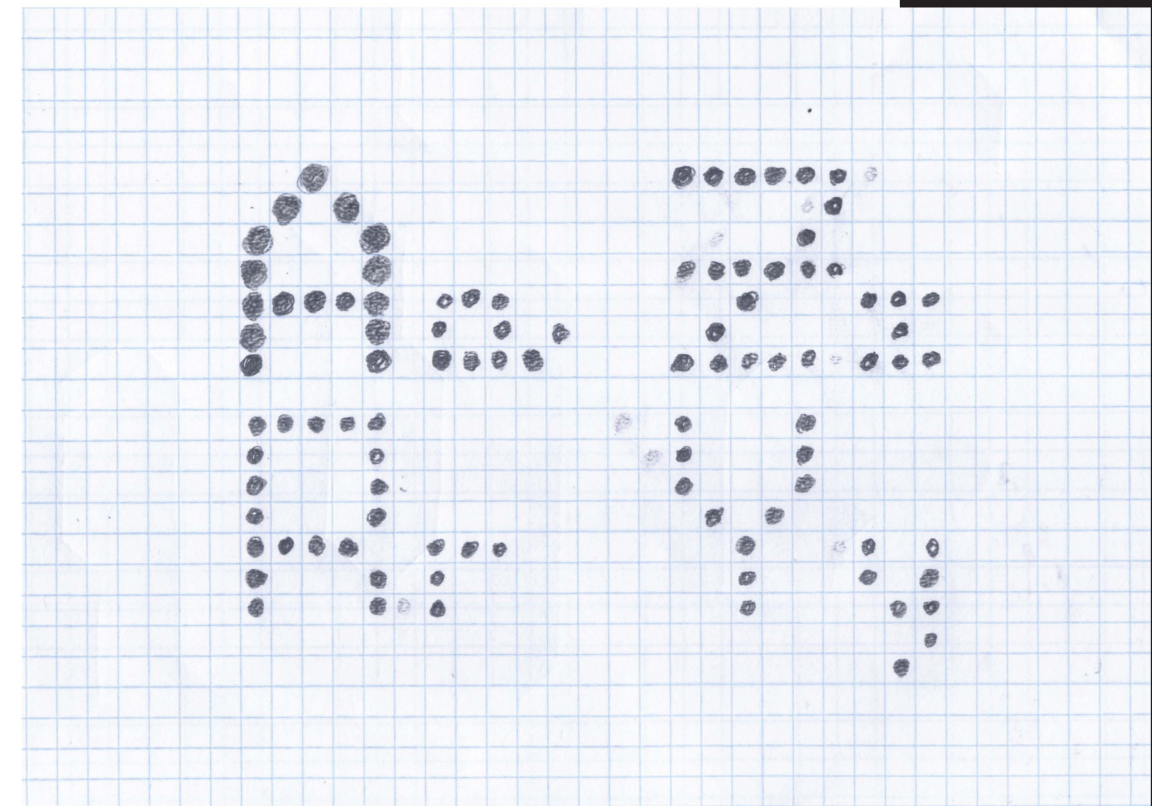


C c

D d

E e

C c





Aa

Bb

Aa

Bb

BbAa 

1989-2011 top 40 Best shows !

- | | | | |
|---|---|---|--|
| 1. Battlestar Galactica (SCI FI 2005 – 2009) | 11. The West Wing (NBC 1999 – 2006) | 21. Breaking Bad (AMC 2008 –) | 31. Andy Richter Controls The Universe (FOX 2002 – 2003) |
| 2. Deadwood (2004 – 2008 HBO) | 12. Friday Night Lights (NBC 2006 –) | 22. Spaced (BBC 1999-2001) | 32. Flight of the Conchords (HBO 2007 – 2009) |
| 3. The Sopranos (HBO 1999 – 2007) | 13. 30 Rock (NBC 2006 –) | 23. Life on Mars (BBC 2006 – 2008) | 33. Party Down (Starz 2009 –) |
| 4. The Daily Show with Jon Stewart (Comedy Central 1999 –) | 14. Angel (WB 1999 – 2004) | 24. Firefly (FOX 2002 – 2003) | 34. It's Always Sunny in Philadelphia (FX 2005 –) |
| 5. The Wire (HBO 2002 – 2008) | 15. The Office (BBC 2001 – 2003) | 25. Undeclared (FOX 2001 – 2002) | 35. Gilmore Girls (WB 2000 – 2007) |
| 6. The Office (NBC 2005 –) | 16. Veronica Mars (UPN & CW 2004 – 2007) | 26. The Middleman (ABC Family 2008) | 36. Curb Your Enthusiasm (HBO 2000 –) |
| 7. Mad Men (AMC 2007 –) | 17. Doctor Who (BBC 2005 –) | 27. The Colbert Report (Comedy Central 2005 –) | 37. The Simpsons (FOX 1989 –) |
| 8. LOST (ABC 2004 –) | 18. How I Met Your Mother (CBS 2005 –) | 28. Extras (BBC 2005 – 2007) | 38. Scrubs (NBC / ABC 2001 – 2009) |
| 9. Freaks and Geeks (NBC 1999 – 2000) | 19. Slings and Arrows (The Movie Network 2003 – 2006) | 29. Rome (HBO 2005 – 2007) | 39. King of the Hill (FOX 1997 – 2009) |
| 10. Arrested Development (FOX 2003-2006) | 20. Chuck (NBC 2007 –) | 30. Buffy The Vampire Slayer (WB & UPN 1997 – 2004) | 40. South Park (Comedy Central 1997 –) |

Seen It Can't Get Enough !

Seen it Loved It !

I've Seen It.

Friday Night Couch Potato Yeah!

for more info go to <http://leadingedge01.wordpress.com>

May 30 2008

A Brief History of Type

<http://ilovetypography.com/2008/05/30/a-brief-history-of-type-part-4/>

Part Four: Modern (Didone)

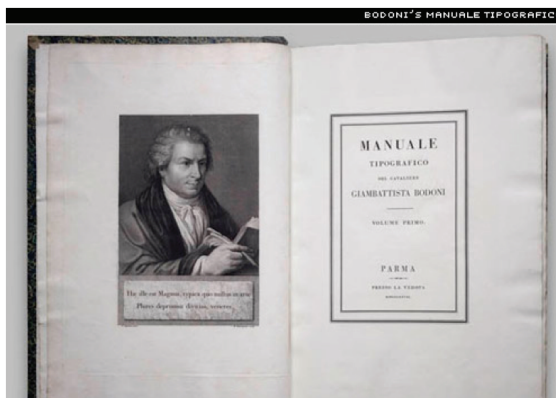
In the previous installment of this series, we took a closer look at Transitional style typefaces, so-called because they mark a transition from the former Old Style types—epitomized by Baskerville—and the subject of today’s brief history, the Moderns, also known as Didone (the terms Modern and Didone are used synonymously throughout this article). Baskerville’s types, compared with their Old Style (or Galalde) predecessors, are marked by high contrast between thick and thin strokes, so much so that one commentator declared Baskerville was “blinding the nation.” The Moderns or Didones take this contrast to further extremes (just about as far as one can take them). The first Modern typeface is attributed to Frenchman Firmin Didot (son of François-Ambroise Didot), and first graced the printed page in 1784. His types were soon followed by the archetypal Didone from Bodoni. The Italian type designer, punchcutter and printer Giambattista Bodoni (what a great name! [1740-1813]) drew his influence from the Romains du Roi (with its flat, unbracketed serifs) and the types of John Baskerville (high contrast), for whom he showed great admiration.



Soundtrack sewn into 873 garments
REGGAE
Sound system formulas
EMITS 1,425 WATTS
MP3-streaming cuffs
Volume



Cerle social
GRANDE PROCLAMATION
Libres Citoyens
Discours pragmatique



Bodoni will forever be associated with the hordes of digital interpretations from just about every type foundry on earth—the FontBook devotes some 14 pages to flavors of Bodoni; some are faithful digital renderings, others well-crafted interpretations; while others still are nothing but parodies, suitable only for poster headlines or the typographic scrap-heap. However, Bodoni was a prolific type designer, completing hundreds of typefaces; the Museo Bodoniano in Parma, houses more than 25,000 of his punches! Bodoni’s Manuale Tipografico¹ (1818) contains 142 roman typefaces and their corresponding italics—and that’s just volume one. The second volume includes numerous ornaments, Arabic, Greek, Russian, and Tibetan

Characteristics

1. High and abrupt contrast between thick and thin strokes;
2. Abrupt (unbracketed) hairline (thin) serifs
3. Vertical axis
4. Horizontal stress
5. Small aperture



Modern-day Moderns

Open just about any fashion magazine, and you’ll spot a Didone. If it’s a premium brand (read “very expensive”), then it may well be brought to you on the back of Bodoni or Didot. Not being a subscriber to any fashion titles (you’d understand if you saw my wardrobe), I took a trip to my local café and snapped about 100 examples of Modern types. Here are just a few:



If you’ve read the preceding three installments, then you will have noticed a move away from the Humanist or handwritten letterforms. The romans of the Modern types owe very little, if anything to the earlier calligraphic forms; they are too precise, too sharp, too clean. Whereas the Old Style types are Neoclassical, the Didones are Romantic. Though both forms share a common vertical (rationalist) axis, the Moderns have even greater contrast.

What are they good for?

There’s something rather clinical about the Moderns, especially in the roman capitals. Their vertical axis coupled with strong horizontal stress furnishes them with the stiffness of toy soldiers on parade. They are elegant, and like all things elegant, look unhurried, calm, and in control. They’re generally not suited to setting extended text, as the verticality of the letter forms interferes with the text’s horizontal rhythm. The letters don’t lead our eyes across the page, but rather up and down. Unsurprisingly, Bringhurst brings some clarity to the subject when he writes,

Romantic letters can be extraordinarily beautiful, but they lack the flowing and steady rhythm of the Renaissance forms. It is that rhythm which invites the reader to enter the text and read. The statuesque forms of Romantic letters invite the reader to stand outside and look at the letters instead.²

The Moderns need lots of space (white space and inter-line space), so give them extra leading and generous margins; and if you pair a Modern with another face, then make sure it’s not a fussy one, or your page will look like a circus poster designed by a visually impaired dog. If you know the beautiful, yet austere architecture of Tadao Ando, then mixing a Didot with, say a Blackletter is akin to draping one of Ando’s monoliths in a giant lace doily.

Erik Spiekermann, in Stop Stealing Sheep, recommends ITC Bodoni as “much better at small sizes than all the others.”³